



SCHON

The Schon

Franchise Opportunity



ABOUT US



Welcome to Schon — where your quest for luxury and practicality in home living finds its answer. Our name means 'beautiful' in German, a standard we uphold in every custom-designed window, door, wardrobe, and kitchen we create. Schon is about bringing your vision to life with a touch of elegance, from chic glass features to contemporary metalwork.

Quality and craftsmanship are at the heart of Schon's ethos. We offer personalized, engineered solutions to make your space truly yours. Our team works hand-in-hand with you to ensure your home reflects your personal style, down to the finest detail.

Quality and craftsmanship are at the heart of Schon's ethos. We offer personalized, engineered solutions to make your space truly yours. Our team works hand-in-hand with you to ensure your home reflects your personal style, down to the finest detail.

OUR COMMITMENT

At **Schon**, we marry the latest style with exceptional craftsmanship to suit your unique tastes. We specialize in personal touches, ensuring that every detail is tailored to your preferences. Our commitment is to bring unparalleled quality and customization into your living space, reflecting the heart of our brand philosophy: Your home, your way, with nothing but the best from us.



THE SCHONMARKETING FRANCHISE

Empowering Professionals with a Work-From-Home Opportunity

At **Schon**, we believe in creating opportunities that empower professionals to take control of their careers from the comfort of their own homes. Our innovative franchise model is designed to suit the needs of individuals with backgrounds in marketing, sales, or civil engineering. With no upfront investment required for civil engineers and minimal effort needed to achieve success, our model seamlessly integrates into your existing lifestyle.



INTROUCTION TO THE SCHON NEW MARKETING FRANCHISE MODEL



Zero Investment

For civil engineers, the opportunity to join the franchise comes with no upfront financial investment.

Minimal Effort

The model is designed to fit into your existing lifestyle, requiring only limited effort to achieve success.

UNIQUE FRANCHISE OPPORTUNITY

Flexible Work Environment

Operate from the comfort of your home, with the freedom to manage your schedule.

Simple and Scalable

Engage with clients at project sites, gather information, and secure orders to earn commissions.

WHY CHOOSE THE SCHON?

01

Tailored For Professionals

Whether you're a marketing expert or a civil engineer, The Schon offers a path to financial independence with minimal risk.

02

Commission-Based Earnings

Start earning from your second closed order, with the potential to scale your income as you grow your client base.

03

Mission Statement

Empowering professionals to succeed in the marketing and engineering industries through a flexible, commission-based franchise model.

ELIGIBILITY CRITERIA

Targeted at marketing professionals and civil engineers, The Schon franchise offers zero investment for engineers and a minimal deposit for non-engineers. This model is tailored to help you succeed in the marketing and engineering industries, providing a low-risk opportunity to grow your income.

Target Audience:

Marketing Professionals: For individuals with marketing experience, this franchise offers a platform to apply your skills in a new and lucrative way.

Civil Engineers: Suited for civil engineers who can benefit from joining the franchise without any initial financial outlay.



Benefits of Joining:

- **Engineers:** Enter the franchise at no cost, allowing you to focus on building your business with your engineering knowledge.
- **Non-Engineers:** A small investment of ₹50,000 is required to get started, covering setup and training to help ensure your success.

ZERO INVESTMENT FOR ENGINEERS

Join the Schon Franchise with No Upfront Investment

Details:

- **Exclusive Offer for Civil Engineers:** If you have a background in civil engineering, you can join the Schon franchise without any initial financial investment. This unique opportunity allows you to start your journey with zero upfront costs, making it an ideal path for those ready to leverage their expertise.
- **Leverage Your Expertise:** Utilize your existing knowledge and skills in civil engineering to succeed in this business. Your technical background will give you a competitive edge in understanding client needs, securing orders, and delivering top-notch service.

By joining Schon, you're not just stepping into a franchise—you're stepping into a world of possibilities where your skills and experience are the foundation of your success.

INVESTMENT FOR NON-ENGINEERS

Start Your Journey with The Schon Franchise

Initial Deposit:

- **Required Investment:** Non-engineers are required to make a ₹50,000 deposit to join the Schon franchise. This investment is essential for covering initial setup costs and comprehensive training to equip you for success.
- **Commitment to Success:** The deposit not only facilitates your entry into the franchise but also reflects your commitment to building a thriving business. This initial investment lays the foundation for your journey, ensuring that you're fully prepared and motivated to achieve your goals.

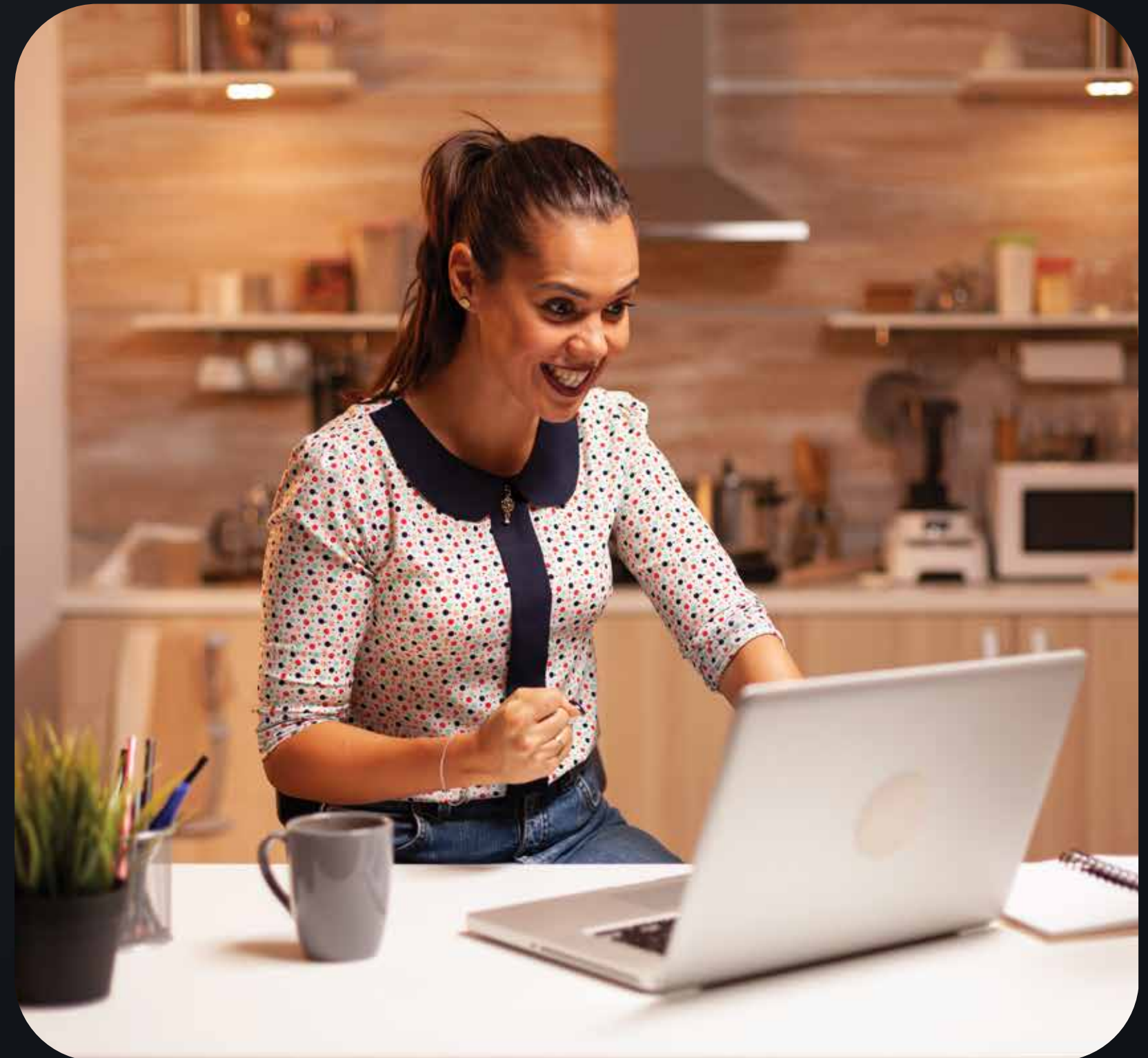
By investing in The Schon, you're taking the first step towards financial independence and a rewarding career in a flexible and supportive environment.

WORK FROM HOME FLEXIBILITY

Experience the Freedom of Flexible Work with The Schon

Key Features:

- **Work from Home:** Enjoy the comfort and convenience of working from home. The Schon franchise allows you to operate your business without the need for a traditional office setup, giving you the freedom to work from anywhere.
- **Effective Time Management:** Take control of your schedule and balance your professional and personal life effortlessly. This flexibility enables you to prioritize tasks and achieve work-life harmony.
- **No Physical Office Needed:** There's no need for extensive infrastructure or a physical office space. With The Schon, all you need is your expertise, dedication, and a drive for success.



CLIENT ENGAGEMENT

With The **Schon**, your approach to client engagement is strategic and client-centered, setting the stage for successful transactions and ongoing business growth.

How It Works:

- **On-Site Client Meetings:** Engage with clients directly at their project sites to build strong relationships and gain firsthand insights into their needs. This personalized approach helps establish trust and credibility.
- **Understanding Client Needs:** Gather all the necessary details during your meetings to thoroughly understand the client's specific requirements. This knowledge allows you to offer the most relevant and effective solutions.
- **Tailored Solutions for Success:** Use the insights gained from client interactions to provide customized solutions that meet their unique needs. By delivering precisely what the client is looking for, you increase the likelihood of securing orders and building long-term partnerships.

COMMISSION-BASED EARNINGS

Unlock Your Earning Potential with The Schon

Earning Potential:

- **Earn Commission on Every Sale:** With The Schon franchise, you receive a commission for each sale you make. This performance-based earning structure ensures that your hard work directly translates into financial rewards.
- **Payout from the Second Order:** Commissions are paid out starting from your second closed order, allowing you to quickly see the benefits of your efforts and start building your income.
- **Unlimited Growth:** The more clients you engage and orders you close, the higher your earning potential. Your income grows alongside your success, offering you the opportunity to achieve financial independence through your dedication and skill.



GROWTH OPPORTUNITIES

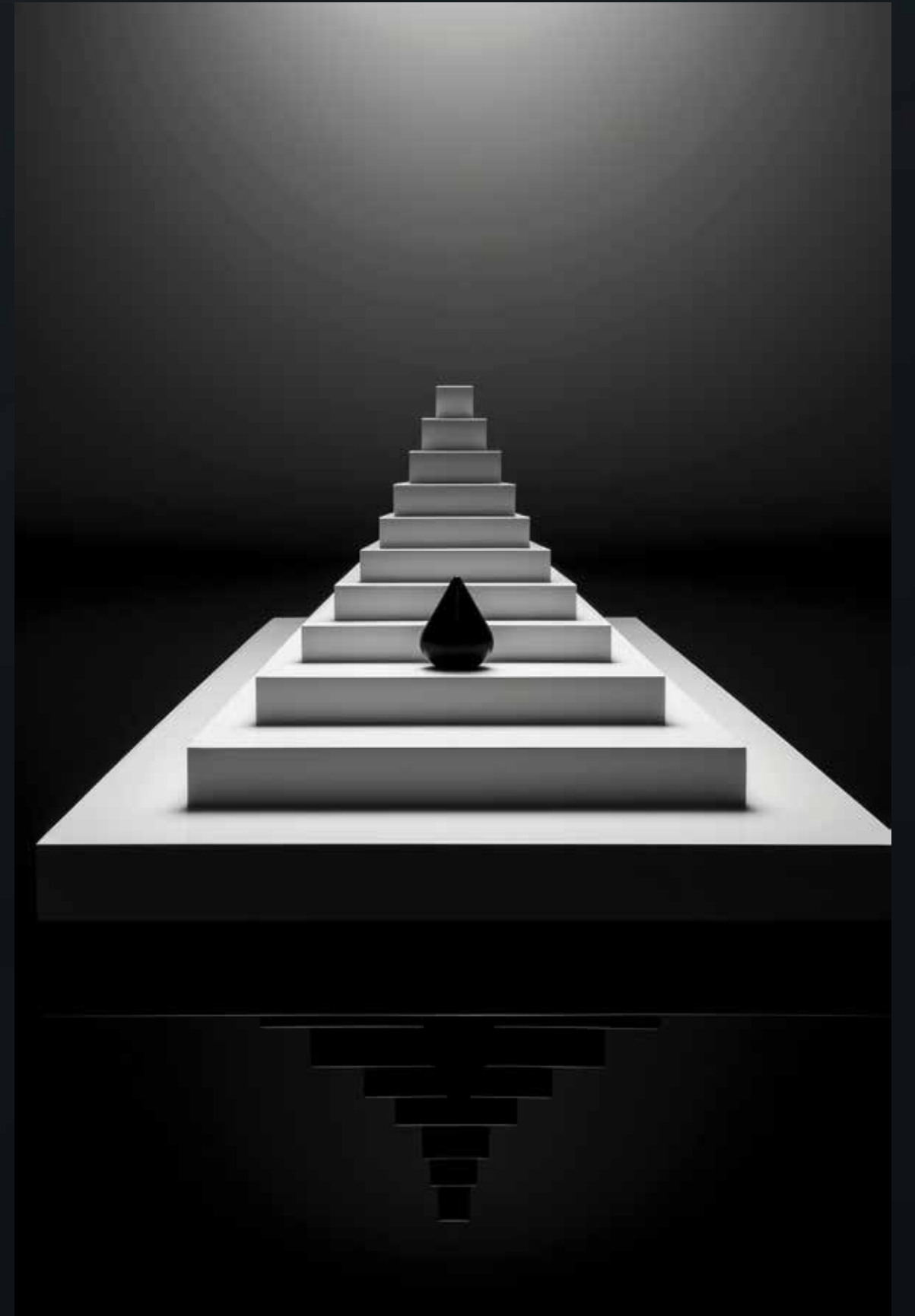
Unlock New Horizons with The Schon

With The **Schon**, growth opportunities are boundless. As you build a strong network of clients and industry contacts, you pave the way for expanding your influence within the franchise. The more connections you make, the more your business flourishes, allowing you to scale and achieve greater success. This model is designed to grow alongside you, providing continuous opportunities for professional development and increased earning potential. Your journey with Schon is one of constant growth and limitless possibilities.



STRATEGIC ROADMAP FOR BUSINESS DEVELOPMENT

This slide introduces the growth plan for Schon, outlining the strategic steps to enhance business development. The focus is on creating a structured approach to expanding market presence, operational capabilities, and physical infrastructure.



STEP 1 – START MARKETING AND LEARN THE TECHNOLOGY

The primary goal is to build market awareness and establish technical proficiency.

Developing a comprehensive marketing strategy is crucial. This includes leveraging social media platforms, running targeted online ads, and engaging in local networking events to create brand visibility. Concurrently, the team will undergo training on the technology to ensure smooth operational execution. Early efforts will focus on generating leads and converting them into potential customers, setting the stage for future growth.



STEP 2 – FINALIZE 15 ORDERS AND SET UP SHOWROOM

The aim is to secure initial orders and establish a physical showroom to enhance market presence.

Achieving 15 confirmed orders will serve as a key milestone. Following this, the focus will shift to planning and setting up a showroom in a strategically chosen location. The showroom will be designed to highlight key products and improve the customer experience. The engineer will handle the rental and advance payments. Additionally, local manufacturing will commence in a factory establishment to support production and assembly of goods.

CONCLUSION

Joining "The Schon" provides exceptional benefits, including flexibility, impressive earning potential, and extensive growth opportunities. Our esteemed network offers a unique platform to advance your career while enjoying the support and prestige of a renowned brand.

Don't miss out on this opportunity to elevate your professional journey. Join "The Schon" today and unlock your full potential. For more information or to get started, contact us at [Your Contact Information].

CONTACT INFORMATION



SCHON



contact@theschon.com



www.theschon.com



+91 95353 59481